



As a vibrant family of believers, Faith Lutheran shares God's saving grace to equip the next generation.

Messenger

April—2026

volume 66 . issue 4

a message from senior pastor, Jacob Heine

And if Christ has not been raised, then our preaching is in vain and your faith is in vain... For if the dead are not raised, not even Christ has been raised. And if Christ has not been raised, your faith is futile and you are still in your sins... But in fact Christ has been raised from the dead, the first fruits of those who have fallen asleep.

1 Corinthians 15:14, 16-17, 20

Last year I had the opportunity to step twice into the tomb where Christ was laid. It is an awe inspiring and powerful place to stand. Yes, it looks very different than it would have on that first Easter. Yes, the space of the tomb is adorned with many articles of worship and looks little like the tomb it once was. But, make no mistake, there is still something amazing about standing in this place where God laid in rest from the work of saving the world through His death.

Also, and maybe even more importantly, that tomb is empty! **CHRIST IS RISEN!**

It is important that Christ Is Risen, because that means that our faith matters. It means that our lives matter now. And it means that what we do in this life and how we live matters. In other words, the resurrection matters.

You have been baptized into Christ's death AND resurrection. You are living resurrection life now. We don't see the fullness of what that means yet. That has to wait until that great and glorious day when Christ returns and we enter into the re-creation that will have no end. But that doesn't mean that we haven't started to live different now.

As the vibrant family of believers here at Faith Lutheran, this is the message of God's saving grace that we share! Christ has died, but it doesn't end there! **Christ Is Risen!** This is a message that changes our lives and the lives of all we interact with. Because Christ lives, we also live—and we strive to treat others as He has shown us.

Throughout Lent, we walked together through the Red Letter Challenge. We could say, "This is how we live as resurrection people!" When we want to know what that looks like, Jesus has left us His words—the red letters—so that we know what we should do and how we should live.

- **Spend time being with God**
- **Forgive others as you have been forgiven**
- **Serve your neighbors, and allow others to serve you**
- **Give to support the mission of God in your congregation**
- **Go and proclaim Christ's life, death, resurrection, and return to all the world**

We are truly resurrection people. What a joy to know that the tomb is empty and we are in Christ, now and forevermore!

In Christ's Hands,
Pastor Heine

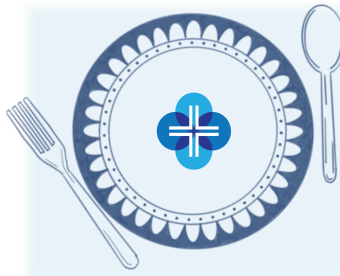


APRIL

IN THIS NEWSLETTER:

| | |
|-------------------------------|----|
| WOW Menu & Youth | 2 |
| Holy Week Schedule | 3 |
| Upcoming Events..... | 4 |
| Calendar | 5 |
| Community/Outreach | 6 |
| LWML | 7 |
| Parish Nurse Article..... | 8 |
| Birthdays/Anniversaries | 9 |
| Photos..... | 10 |





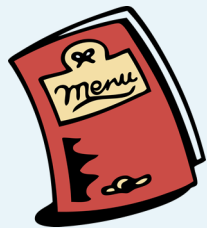
Word On Wednesdays

Dinner served— 5:15-6:00pm

Classes for all ages—6-7:30pm

- **Pre-K through 4th grades:** Classes with Activity Stations
- **5th-6th grades:** Bible Study led by Eric Boling & Dave Wodtke
- **7th-8th grades:** Confirmation led by Called Staff
- **9th-12th grades:** Bible Study led by Ray Moran & Justin Campbell
- **Adult Bible Study:** Journeying with Jesus led by Pastor Heine

April WOW Menu



4/8: baked ham, cheesy potatoes, corn, dinner roll/butter and cake

4/15: chicken tenders, fries, veggies/dip and brownies

4/22: breakfast casserole, sausage, hashbrowns, fruit and cupcakes

4/29: pizza and ice cream

FREE! **EASTER** Food! Inflatables! Easter Story!
EGGSTRAVAGANZA
Saturday, April 4
11am-1pm | At Faith
1716 SW Gage

Join us **Saturday, April 4, from 11:00am to 1:00pm** (rain or shine) for our Annual Easter Eggstravaganza! This **FREE** community event features fun Easter crafts, the story of Jesus' Resurrection, an exciting egg hunt, face painting, inflatables, and so much more.

Plus, enjoy a complimentary lunch on us!

Sr Youth host coffee fellowship on **Sunday, April 19**. Youth need to arrive at 8:30am to help set up and greet congregation members as they enter the Fellowship Hall. All proceeds go toward youth trips.

Rainforest Falls
VBS
June 15-19
Morning & Evening Sessions
Register online or scan the QR code!

Registration is OPEN! Step through the mist into Rainforest Falls, overflowing with wild waterfalls, towering trees, and colorful creatures. Beneath a canopy of chattering birds and howling monkeys, kids plunge into a lifelong adventure of discovering the nature of God. They'll explore what it means to be rooted in relationship with God, their creator, a safe place in life's storms. Join us **June 15-19**, both morning and evening sessions available. **Adult volunteers** are also needed. Scan the QR code above, check the sign up in the lobby or go to faithlutherantopek.com to see multiple volunteer opportunities. We can't wait to adventure into the rainforest with you and learn more about our awesome God together!

SUMMER YOUTH TRIPS

Junior Youth Summer Trip registration is open.

This summer, our junior youth will be heading to **YMCA Trout Lodge in Potosi, MO** from **July 26-29**. Registration forms, along with a \$100 deposit, must be submitted to the church office by **Sunday, May 3**. This trip is open to students who have completed 5th through 8th grade.

Senior Youth Summer Trip registration is open.

This summer, our senior youth will be traveling to **YMCA Snow Mountain Ranch in Granby, CO** from **July 13-19**. Registration forms, along with a \$100 deposit, are due to the office by **Sunday, May 3**. This trip is open to students who have completed 8th through 12th grade.

holy week. easter.

< THE EASTER TRIDUUM >

In these three holiest days of the year, we are plunged into the self-sacrificing death of Christ, so that we might, with even greater joy, celebrate His resurrection from the dead. It is three days, but one liturgy, with no benediction until the end of Easter worship.



MAUNDY Thursday

APRIL 2 | Maundy Thursday *Recalls the night Jesus shared a Passover meal with his disciples.*

5:00pm Worship - Traditional-style service with Holy Communion.

7:00pm Worship - Traditional-style worship ends with the stripping of the altar; special music by the choir. Students who completed preparation classes will take their First Communion.

APRIL 3 | Good Friday *We remember Jesus' suffering and death which led to victory over sin.*

12:00 noon Worship - This 'Tre Ore' traditional-style service follows the seven last words from the cross.

7:30pm Worship - The Service of Darkness (Tenebrae) takes us to the most solemn moment on Calvary through Scripture, message, hymns, and powerful choir selections... ending in darkness and silence.



GOOD Friday

APRIL 5 | Easter Sunday *Celebrate Jesus' resurrection as God has defeated the power of evil and death. Holy Communion will be celebrated at all services. Consider coming to Sunrise + another worship for the complete Easter story!*

6:30am Sunrise Service - This service is all about the mystery of the resurrection. The congregation gathers in the lobby in darkness before entering the sanctuary, as we encounter the empty tomb and hear the message that "He Is Risen!"

8:00 & 9:30am Traditional - (Note: Change of worship times. No 12:15 service this day). Worship with a powerful message, triumphant hymns, joyous selections by Alleluia Ringers and the Choir, with brass & organ.

11:00am Modern - (Note: Time change) Celebrate the resurrection with a victorious message and uplifting contemporary songs featuring the Praise Team, Alleluia! Ringers, Choir and brass.



EASTER Sunday



EASTER Sunday Breakfast

Easter Breakfast served 7-11am in the Fellowship Hall by Scout Troop 59. Free will donation gladly accepted.

.upcoming events.



Garage SALE

Sr Youth are collecting gently-used items for their **Annual Garage Sale**. Examples include but are not limited to: furniture, kitchen items, games, knick-knacks, etc. Donations can be brought to the south campus, **Mon - Fri, 8-12pm or 1-4:30pm.**



Must be 21+ to attend.

Guided *Spiritual Retreat*

Registration open now for April 17-19! Scan the QR code for additional details!

Can't make April? Watch for registration for other retreats! June 5-7 | August 7-9 | October 9-11

Adults Age 21+ are invited to join us for a weekend of Guided Spiritual Retreat on **Friday, April 17 through Sunday, April 19**. Participants will spend time in worship, Bible study, individual reflection time, and group discussions. There will also be opportunities for loosely guided activities and meals together, both individual and group based. Scan the QR code or register



FAMILY CAMP

SCAN TO REGISTER!

**JUNE 28-JULY 2
CAMP LUTHERHOMA
TAHLEQUAH, OKLAHOMA**

**-- COME ONE, COME ALL --
TO CAMP LUTHERHOMA!**

Ready to make memories, deepen friendships, and grow in faith together?

Households of all sizes invited to join us for a week of family camp, **June 28-July 2**.

Programming begins the evening of Sunday, June 28 and concludes the evening of Thursday, July 2. Children 5 and under attend FREE!

Scan the QR code or register [HERE](#)

Can't make it the whole week?

No problem! Just register for the day(s) you can attend.

Payment is per person, per day.



COMMUNITY SERVICE DAY OUT

*Saturday, April 25
9am-12pm*

Begins at Faith with coffee & breakfast before departing for service projects!

Join us for **Community Service Day!** As Matthew 25:40 reminds us, *"Whatever you did for one of the least of these... you did for me."* Community service is one of the clearest ways we can live that out.



Come and celebrate Pastor Heine's 20th Anniversary!

PASTOR HEINE'S 20TH ORDINATION ANNIVERSARY

Dinner provided.

Mark your calendars. More details coming soon!

Saturday, July 11 | 4pm

Join us at Heritage Hall to celebrate Pastor Heine's 20th Ordination Anniversary!

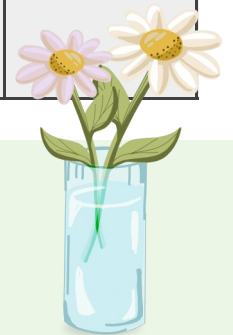
Dinner is provided.



| Sunday | Monday | Tuesday | Wednesday | Thursday | Friday | Saturday |
|--|---|---|---|--|--|--|
| 29 Palm Sunday 8:00am Traditional Worship 9:30am Education Hour 10:45am Modern Worship 12:15pm Traditional Worship | 30 5:00pm LWML Exec Meeting 6:00pm Cub Scouts 7:00pm Scouts | 31 | 1 | 2 Maundy Thursday 5:00pm Maundy Thursday Worship 7:00pm Maundy Thursday Worship w/1st Comm. | 3 Good Friday 12:00pm Tre Ore Worship 7:30pm Tenebrae Worship | 4 8:00am Men's Bible Study 9:00am Breakfast Club 9:00am Praise Team rehearsal 11:00am Easter Eggstravaganza |
| 5 Easter Sunday 6:30am Easter Sunrise Worship 7:00am Boy Scouts Easter Breakfast 8:00am Traditional Worship 9:30am Traditional Worship 11:00am Modern Worship 3:00pm Deaf Church & Potluck | 6 <i>Church Office Closed</i> 5:30pm Hannah Circle 6:00pm Cub Scouts 7:00pm Scouts | 7 10:00am Bible Study 6:30pm Spiritual Life | 8 11:00am Care Card Making 5:15pm WOW Meal 6:00pm WOW 7:30pm Praise Team rehearsal | 9 8:00am Scrapbooking | 10 8:00am Scrapbooking | 11 8:00am Men's Bible Study 8:00am MOST Ministry 9:00am Breakfast Club 9:00am LWML Zone Spring Mtg @ Immanuel, Lawrence |
| 12 8:00am Traditional Worship 9:30am Education Hour 10:45am Modern Worship 12:15pm Traditional Worship | 13 9:00am Quilting 6:00pm Cub Scouts 7:00pm Scouts | 14 10:00am Bible Study 6:00pm LLC 6:00pm LWML Spring Salad Supper | 15 1:30pm Deborah Circle 5:15pm WOW Meal 6:00pm WOW 7:30pm Praise Team rehearsal | 16 6:00pm Bell rehearsal 7:15pm Choir rehearsal | 17 | 18 8:00am Men's Bible Study 9:00am Breakfast Club |
| 19 8:00am Traditional Worship 9:30am Education Hour 10:45am Modern Worship 12:15pm Traditional Worship | 20 6:00pm Cub Scouts 7:00pm Scouts | 21 10:00am Bible Study | 22 11:00am Care Card Making 5:15pm WOW Meal 6:00pm WOW 7:30pm Praise Team rehearsal | 23 6:00pm Bell rehearsal 7:15pm Choir rehearsal | 24 | 25 8:00am Men's Bible Study 9:00am Breakfast Club 9:00am Community Service Day Out |
| 26 8:00am Traditional Worship 9:30am Education Hour 10:45am Modern Worship 12:15pm Traditional Worship | 27 9:00am Quilting 5:00pm LWML Exec Meeting 6:00pm Cub Scouts 7:00pm Scouts | 28 10:00am Bible Study | 29 *LAST WOW 5:15pm WOW Meal 6:00pm WOW 7:30pm Praise Team rehearsal | 30 6:00pm Bell rehearsal 7:15pm Choir rehearsal | 1 | 2 8:00am Men's Bible Study 9:00am Breakfast Club |

Thank You

Thank you for your thoughts, prayers, text messages and emails, and the many cards I received following my unexpected surgery and rehab. I miss seeing you all. Your kindness and compassion are deeply appreciated. ~Ginny Falk



.COMMUNITY. .OUTREACH.



DOORSTEP
Neighbors Helping Neighbors

Do you enjoy classic car shows? Join us on **Saturday, April 25**, at Penwell-Gabel Funeral Home (10th & Lane) for a special benefit event for Doorstep. The day will include live music, craft vendors, a food truck, and, of course, a variety of cars, trucks, and motorcycles on display. Interested in participating? **Contact Misty at 785-354-8558 for more information.**

DOORSTEP MINISTRY UPDATE

Thank you to all who participated in the Starlight Auction. As our first year hosting this fundraiser, it was a great success! We look forward to an even larger auction next year—please consider how your group or business might contribute an interesting themed basket or a donated service.

When Doorstep helps a neighbor in need, it can make the difference between stability and crisis. Support from events like the Starlight Auction helps provide:

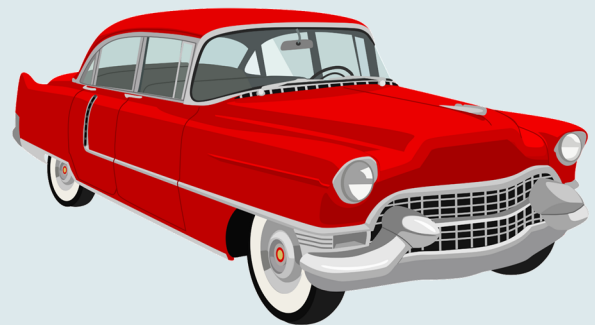
- Food assistance
- Transportation
- Prescription support
- Stabilizing help for families

Your participation in Doorstep fundraisers allows this important work to continue, serving neighbors throughout Topeka.

UPCOMING FUNDRAISERS

Throughout April, Doorstep will receive proceeds from the sale of **Re-Imagined Jewelry at Café Quetzal (2111 SW Belle)**. This is a wonderful opportunity to treat yourself or find gifts for birthdays, Mother’s Day, graduations, and more—while also helping your neighbors. **Doorstep receives 95% of all jewelry sale proceeds.**

Classic Car Show



Mark your calendars for the **9th Annual Neighbor Helping Neighbor Walk/5K Fun Run and 60th Anniversary Celebration** on **Saturday, June 6**, at Christ the King Catholic Church. In addition to the walk/run through the neighborhood, the event will feature a car show, bouncy houses, food trucks, and more. We will also share Doorstep’s vision for the future. Save the date and join us for exercise, fellowship, and a day of family fun!

February 2026 ... flc treasurer update



For the current month

| | |
|---|-----------|
| Total General Fund Donations | 109,958 |
| Operating Expenses (excluding net rental property income) | \$ 94,029 |
| Net Balance for the month | \$ 15,929 |

Year-To-Date

| | |
|---|-----------|
| Total General Fund Donations | 210,999 |
| Operating Expenses (excluding net rental property income) | \$ 92,533 |
| Net YTD Balance | \$ 18,466 |

Donations

| | |
|---|-------------|
| Current month compared to the prior year MTD - Over (Under) | \$ 4,413 |
| YTD compared to the prior year - Over (Under) | \$ (19,539) |



*Oh come, let us sing to the LORD;
let us make a joyful noise
to the rock of our
salvation!
Psalm 95:1*

Spring Fellowship and Service Update

Circles will not meet in April due to our biannual gathering on **April 14**. On that evening, we will come together to elect officers for the coming year and conduct other important business. Prior to the meeting, please join us for our **Annual Spring Salad Supper at 6:00pm** in the Fellowship Hall. Bring a salad to share and feel free to invite a guest.

We are also pleased to welcome a presentation from **Project 2Restore**, a faith-based residential home in Topeka that serves women who are survivors of sexual exploitation. Their mission is to provide hope, a fresh start, and a life-changing relationship with Jesus Christ. Come enjoy an evening of fellowship, good food, and the opportunity to learn about this meaningful ministry in our community.

April 11 - Topeka Zone Event will take place at **Immanuel Lutheran Church in Lawrence from 9:00am - 1:00pm**. Gifts from the Heart will be collected to benefit Willow Domestic Violence Center: full sized toiletries for adults and children.

DEBORAH CIRCLE met on Wed, March 18, at church for devotions and fellowship and will meet again on **May 20** at 1:30pm at church.

In March, **EVE CIRCLE** gathered to clean the kitchen, share pizza for dinner, hold a Bible study, and conduct their meeting.

RUTH CIRCLE will host the **Spring Salad Supper** on **April 14**.

Kansas District LWML Convention April 17-19 . Manhattan, KS



April 17-19 – The Kansas District LWML Convention will be held in Manhattan. The convention theme, “Bear Fruit that will Last,” will guide the weekend’s worship, fellowship, and business sessions.

Our group will be represented by four voting delegates, who will participate in selecting grant recipients and electing district officers for the 2026-2028 biennium.

For additional details about the convention, please visit the [Kansas District LWML website](#)



“Watch Your Mouth” - An Important Reminder

a message from our Parish Nurse Pat Schultz, RN



A new friend I met just last month shared a simple but powerful phrase with me: “*Watch your mouth.*” At first, it sounded like something we might say to a child about using kind words. But for my friend, it carried a much deeper meaning—one shaped by a recent journey with oral cancer.

April is both Oral Cancer Awareness Month and Tongue Cancer Awareness Month, making it a good time to learn more about these conditions and how we can care for ourselves and others.

Understanding Oral Cancer

Oral cancers include cancers of the mouth, tongue, and throat. While they share many similarities, let’s focus on tongue cancer for simplicity.

Tongue cancer can occur in:

- The **front two-thirds of the tongue** (oral tongue), which is part of the mouth and easier to see—often allowing for earlier detection.
- The **back one-third of the tongue** (base of the tongue), located in the throat, where cancer may go unnoticed longer and spread before diagnosis.

Though relatively rare, tongue cancer is often aggressive and life-changing, frequently requiring surgery and radiation.

Early Signs and Symptoms

Be aware of the following:

- A persistent sore, lump, or ulcer that does not heal within three weeks
- Red, white, or mixed patches on the tongue
- Ongoing pain, burning, or sore throat
- Numbness in the mouth or tongue
- Unexplained bleeding
- Difficulty or pain when swallowing or chewing

Risk Factors

Common risk factors for oral cancers include:

1. **Tobacco use** (cigarettes, cigars, pipes, chewing tobacco)
2. **Heavy alcohol use** (especially combined with tobacco)
3. **HPV (Human Papillomavirus)**, particularly HPV-16
4. **Gender** (more common in men)
5. **Age** (most often over 45)
6. **Chronic oral irritation** (such as ill-fitting dentures or jagged teeth)
7. **Poor nutrition**, especially diets low in fruits/vegetables

What You Can Do

Healthcare professionals recommend becoming familiar with your own mouth. Take time to check:

- Your tongue (top, bottom, and sides) for sores, lumps, or discoloration
- The inside of your cheeks for sores, redness, or bleeding
- Your neck and jaw for unusual lumps
- Your gums for redness, swelling, or unexplained bleeding
- Your lips for discoloration or sores

If you notice any changes lasting more than two to three weeks, seek medical attention promptly. Regular dental checkups are also an important way to screen for oral cancer—often before you notice anything yourself.



NOTE:

***Sunday School Offering** for the month of April will go to Faith Deaf Ministry/KansaSEED.

*If you would like to submit something for this publication, please email LaceyGreene@faithlutherantopeka.com by the **15th of every month.**

OFFICIAL ACTS

FUNERALS:

- 3/12 Erik Finch
3/13 Nadene Albrecht

TRANSFER OUT:

- 3/6 Dillon, Ellee & Mack Johnston to St. John Lutheran Church, Alma



April BIRTHDAYS

| | | | | | |
|-------------------|----|-------------------|----|-----------------------|----|
| Henry Banion | 1 | Diane Holloway | 10 | Amber Hamilton | 22 |
| Nicole Bradshaw | 1 | Kelly Killinger | 10 | Ashley Hamilton | 22 |
| Karen Bosch | 2 | Madeline Holter | 11 | Connor Obdyke | 22 |
| Emily Grotbeck | 2 | Larry Saunders | 12 | Trent Robinson | 22 |
| Elyse Myers | 3 | Gerald Schneider | 12 | Landyn Cobler | 23 |
| Rilee Vandervoort | 3 | Ed Thomason | 12 | Kelli Duermeier | 25 |
| Fallon Saxton | 4 | Nick Tenbrink | 13 | Elizabeth Rollenhagen | 25 |
| Meron Ray | 5 | Dawson Pfrang | 14 | Henry Schulteis | 25 |
| Holly Jamison | 6 | Pete Tremain | 14 | Mauer Yoder | 25 |
| Dottie Pinter | 6 | Trevin Reinert | 15 | Judy Corzine | 26 |
| Hadley Kirkeminda | 7 | Gayle Schulteis | 15 | John Rader | 26 |
| Don Snethen | 8 | Rae Johnson | 16 | William Janousek | 27 |
| Wyatt Crawford | 9 | Barb Mesloh | 16 | Erika Yoder | 27 |
| Brandon Durkes | 9 | Barb Smelter | 16 | Cliff Hanser | 28 |
| Stephanie Moran | 9 | Marilyn Keeler | 17 | Carolyn Marlatt | 28 |
| Amie Morlock | 9 | Fred Rogge | 17 | Sara Marstall | 28 |
| Rose Brunkow | 10 | Katelyn Poe | 18 | Maye Yoder | 28 |
| Doug Helmke | 10 | Amy Dunton | 19 | Jennifer Harris | 29 |
| | | Isaac Rollenhagen | 19 | Mike Jennings | 29 |
| | | Brad Glinka | 20 | Marie Pinick | 29 |
| | | Dean Kaufman | 20 | Francy Wells | 29 |
| | | Kaydence Marstall | 20 | Cooper Crawford | 30 |
| | | Grady Wells | 21 | | |
| | | Phillip Bertels | 22 | | |



Women's Retreat Follow-Up



Thank you so much to all the women who attended the Women's Retreat on March 28—and a special thanks to those who invited friends to join the fun! We had our best turnout yet, with 47 women gathered together, even as we explored the less familiar text of the prophet Hosea's life.

Throughout the retreat, women enjoyed meaningful fellowship while tying fleece blankets as a service project and creating bracelets as a reminder of "God's Relentless Love."

If you attended the retreat—or if you'd like to suggest materials for future Women's Retreats—please take a moment to complete the survey using the QR code below or by clicking [HERE](#)

| | |
|-------------------------|----|
| Mickey & Diane Holloway | 5 |
| Scott & Tracy Leonard | 5 |
| Phil & Twila Theimer | 12 |
| Richard & Pat Schmidt | 14 |
| Dave & Shelly Mahon | 17 |
| Kenny & Kayla Riddle | 17 |
| John & Carrie Halupa | 20 |
| David & Marie Pinick | 20 |
| Leo & Brenda Perry | 21 |
| Mark & Jan Zillinger | 21 |
| Steve & Lori Franken | 24 |



Worship at Faith



All Youth Retreat



WOMEN'S RETREAT



FAITH LUTHERAN CHURCH

1716 SW Gage Blvd
Topeka, Kansas 66604



785.272.4214

office@faithlutherantopeka.com

FaithLutheranTopeka.com

Follow us on:
FACEBOOK INSTAGRAM YOUTUBE

STAFF

Jacob Heine, senior pastor
PastorHeine@faithlutherantopeka.com

Martin Albrecht, assistant pastor
PastorMartin@faithlutherantopeka.com

Jeff Lane, associate pastor
JeffLane@faithlutherantopeka.com

Heather McCormick, dir. of youth/family ministry
DCEHeather@faithlutherantopeka.com

Linda Meyer, director of music & worship arts
LindaMeyer@faithlutherantopeka.com

Lacey Greene, admin assist/communications
LaceyGreene@faithlutherantopeka.com

Jason Wills, facility manager/admin coordinator
JasonWills@faithlutherantopeka.com

Debbie Siegel, bookkeeper
Bookkeeper@faithlutherantopeka.com

Pat Schultz, RN, parish nurse
TiredMomPLS@aol.com

Jessica Atchison, SS & WOW superintendent
JessicaKidMin@gmail.com

CHURCH OFFICE HOURS

Mon - Fri 8:00am to 4:30pm (closed 12-1pm)

SUNDAY WORSHIP

8:00* - Traditional Worship

10:45* - Contemporary Worship

12:15 - Traditional Worship

* also live-streamed on Facebook, YouTube

EDUCATION

Sundays for all ages: 9:30am

WOW Wednesdays: 5:15-7:30pm (Sept-Apr)